

Anchorage Park Foundation 2011

AnchorageParkFoundation.org

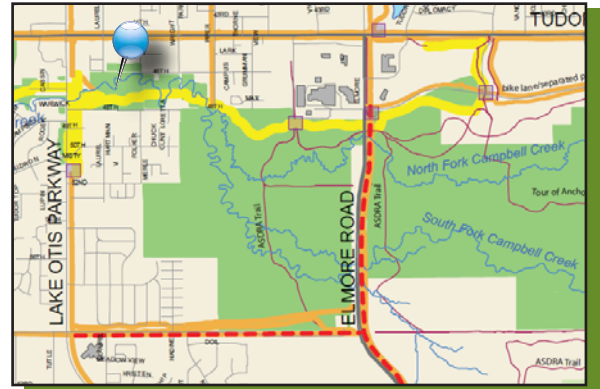


Campbell Park

3501 E. Dowling Road

Park History

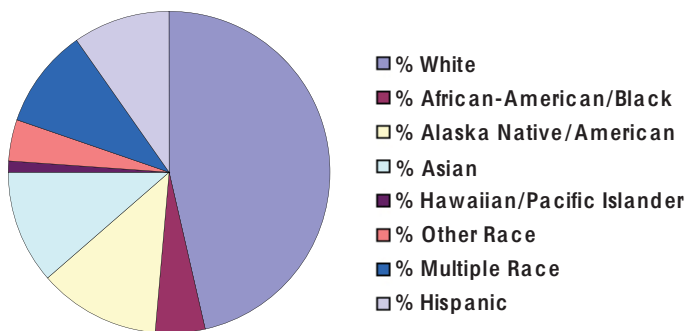
This park is owned by the Municipality of Anchorage and was established in 1982. It is named after the creek that runs the length of the park. The creek is named for Sir Joseph Campbell who explored Alaska from 1792-1785. It was developed with Land & Water Conservation Funds.



Neighborhood Statistics*

Population: 5,537
 Percent of Population under age 18: 22.2%

Ethnic Composition:



*2010 Census Data

Park Facilities & Equipment

- Toddler playground equipment for 2-5 year olds which is ADA accessible.
- Small ballfield area.
- Picnic tables as well as grill.
- A portable restroom may be available from May-August.
- 16 parking spaces as well as 2 handicap parking spaces.



COMMUNITY REPRESENTATIVES:

Mayor Dan Sullivan
 mayor@muni.org

Campbell Park Community Council
 Peter Hamlett, President
 plhamlett@hotmail.com

Assembly District 4
 Dick Traini - trainid@muni.org
 Elvi Gray-Jackson - gray-jackson@muni.org

Alaska State Legislative District 24L
 Representative Berta Gardner
 Representative_Berta_Gardner@legis.state.ak.us
 Senator Johnny Ellis
 Senator_Johnny_Ellis@legis.state.ak.us

Park Profile



REPORT CARD ON PARKS: Campbell Park 2011

Report Card Background

The Anchorage Parks Report Card utilized community volunteers to create a comprehensive picture of the condition of our parks, reflecting the Anchorage community's opinions, preferences and ideas. Anchorage citizens along with Anchorage Parks and Recreation staff evaluated 38 parks based on 6 different settings. Parks were surveyed based on cleanliness, safety, structure, appearance, and function. Anchorage Parks and Recreation staff will use this information to strategically employ its funding and volunteer resources to better meet the needs of the Anchorage community.

OVERALL GRADE	D
Active Recreation Areas	65
Green Spaces	69
Park Entry	67
Passive Recreation Areas	62
Pathways	70
Playgrounds	41

Scores were calculated on a 100 point scale

Campbell Park Findings

Community members reported concerns about unsafe activities occurring in Campbell Park during night hours, as well as extensive litter left by nighttime users. Also, the tot playground is in need of replacement--there are jagged plastic surfaces, splintered paint, and graffiti on play surfaces. Community members would like to see a larger playground for older children to use, as well as informational signs and new grills.

Fix It List

- Remove graffiti on seating and play equipment
- Add swings and equipment for older children to playground
- Add grills and picnic tables
- Add informational signs regarding park uses and hours
- Work with community to address concerns regarding inappropriate activities in the park
- Take control measures to prevent further beaver damage
- Add trash cans around edges of park to help control litter



Some pieces of play equipment are broken and need replacement



A lot of beaver damage in green space

For a complete directory of Report Card results for neighborhood parks, go to www.AnchorageParkFoundation.org/projects/reportcard.htm

The Anchorage Park Foundation developed the Anchorage Parks Report Card in partnership with the Eppley Institute for Parks and Public Lands at Indiana University, and community volunteers, thanks to a generous grant from the Rasmuson Foundation. The APF has raised over \$18 million dollars since 2004 to improve public parks, trail and recreation areas. To make a contribution or volunteer, please visit us at: