

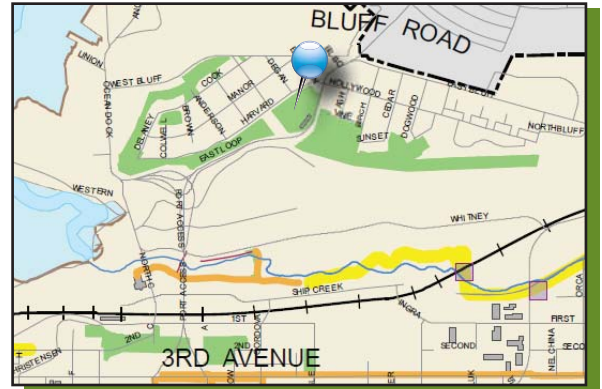


Harvard Park

711 E. Loop Road

Park History

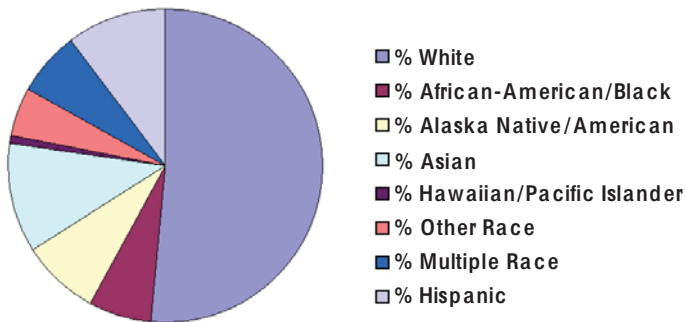
This park was leased from the Alaska Railroad (Department of Interior) in 1961 with a 40-year lease. The park includes two buildings. The first is the old Alaska Railroad Club building located on Mystic Way. This building is operated by the Anchorage Curling Club. The other building is operated by the Square Dance Club.



Neighborhood Statistics*

Population: 1,947
 Percent of Population under age 19: 25.6%
 Rate of referrals to Dept. of Juvenile Justice: Low

Ethnic Composition:



*2010 Census Data

Park Facilities & Equipment

- Two tennis courts
- Basketball courts
- Curling clubhouse
- Square dance center
- Community Adopt-a-Garden
- Parking lot with 100 spaces
- Soft surface trail



COMMUNITY REPRESENTATIVES:

Mayor Dan Sullivan
 mayor@muni.org

Government Hill Community Council
 Matt Burkholder, President
 spenardcc@gmail.com

Assembly District 1
 Patrick Flynn - flynnpp@muni.org

Alaska State Legislative District 181
 Representative Dan Saddler
 Representative_Dan_Saddler@legis.state.ak.us
 Senator Fred Dyson
 Senator_Fred_Dyson@legis.state.ak.us



REPORT CARD ON PARKS: Harvard Park 2011

Report Card Background

The Anchorage Parks Report Card utilized community volunteers to create a comprehensive picture of the condition of our parks, reflecting the Anchorage community's opinions, preferences and ideas. Anchorage citizens along with Anchorage Parks and Recreation staff evaluated 38 parks based on 6 different settings. Parks were surveyed based on cleanliness, safety, structure, appearance, and function. Anchorage Parks and Recreation staff will use this information to strategically employ its funding and volunteer resources to better meet the needs of the Anchorage community.

OVERALL GRADE

A

Active Recreation Areas

100

Green Spaces

N/A

Park Entry

98

Passive Recreation Areas

100

Pathways

90

Playgrounds

100

Scores were calculated on a 100 point scale

Harvard Park Findings

Harvard Park received a C- on the 2008 report card, and was chosen as a 2011 Neighborhood Park Fix-It. We refurbished the Tennis Courts, refurbished the 1/2 court basketball, replaced old signage, installed new trash cans and benches, built a D-1 pathways to Brown's Point with YEP Crews, and planted three Ornamental Trees. Community members graded it an A this year, showing marked improvement.

Fix It List

No comments



Numerous pavement cracks on the entrance drive



Updated tennis court

For a complete directory of Report Card results for neighborhood parks, go to www.AnchorageParkFoundation.org/projects/reportcard.htm

The Anchorage Park Foundation developed the Anchorage Parks Report Card in partnership with the Eppley Institute for Parks and Public Lands at Indiana University, and community volunteers, thanks to a generous grant from the Rasmuson Foundation. The APF has raised over \$18 million dollars since 2004 to improve public parks, trail and recreation areas. To make a contribution or volunteer, please visit us at: