

Anchorage Park Foundation 2008

AnchorageParkFoundation.org

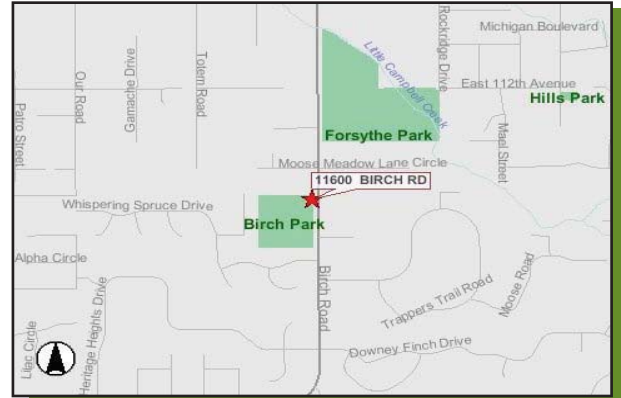


BOB & ARLENE CROSS PARK

11600 Birch Road

Park History

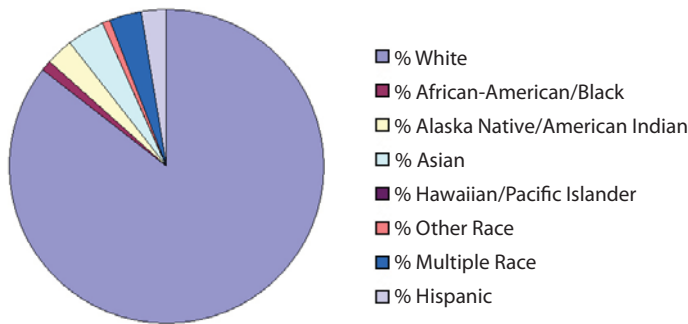
In 1955 this property was deeded to Hilltop Youth by Bob and Arlene Cross to be used for recreation by the Hillside Community. In 1995, the land was donated by Hilltop Youth to the Municipality of Anchorage. In 1996, the community received an Arbor Day grant to plant trees in the park. In 2003, the Parks & Recreation Department installed play equipment and birdhouses. In 2006, the park's name was changed to honor the Cross Family for their contribution to Anchorage parks.



Neighborhood Statistics*

Population: 9,917
 Percent of Population under age 19: 35.2%
 Rate of referrals to Dept. of Juvenile Justice: Med.

Ethnic Composition:



*2000 Census Data

Park Facilities & Equipment

- 10.00 acres
- ADA-accessible play equipment for 2-5 year olds
- Picnic table and benches
- Multi-use field and trail
- Play court with basketball hoops
- Horse-riding ring
- Parking lot with 6 spaces



COMMUNITY REPRESENTATIVES:

Mayor Mark Begich
 BegichMP@muni.org

Southeast Park District Manager
 Shawna Popovici
 PopoviciSL@muni.org

Huffman/O'Malley Community Council
 Ryan Stencel, Chair - council@huffmanomalley.org

Assembly District 6
 Jennifer Johnston - jjohnston@gci.net
 Chris Birch - chrisbirch@gci.net

Alaska State Legislative District 31P
 Representative Bob Lynn
 Rep_Bob_Lynn@legis.state.ak.us
 Senator Con Bunde
 Senator_Con_Bunde@legis.state.ak.us



REPORT CARD ON PARKS: BOB & ARLENE CROSS PARK 2008

Report Card Background

The Anchorage Parks Report Card utilized community volunteers to create a comprehensive picture of the condition of our neighborhood parks, reflecting the Anchorage community's opinions, preferences and ideas. Almost 1,000 citizens along with APRD staff evaluated 53 neighborhood parks based on 6 different settings. Parks were surveyed based on cleanliness, safety, structure, appearance, and function. APRD will use this information to strategically employ its funding and volunteer resources to better meet the needs of the Anchorage community.

OVERALL GRADE

C-

Active Recreation Areas	57
Green Spaces	71
Park Entry	55
Passive Recreation Areas	75
Pathways	78
Playgrounds	83

Scores were calculated on a 100 point scale

Bob & Arlene Cross Park Findings

Community members reported inadequate wood chips in the play area at Bob & Arlene Cross Park, concerns about beetle-killed trees standing throughout the park, and repairs needed to a variety of park structures. Fencing, bollards, bench footings, athletic field equipment and graffiti all require attention.

Fix It List

- Replenish wood chip safety surfacing in play area
- Remove dead trees to reduce fire danger
- Repair ballfield backstop and basketball hoops
- Repair fence between playground and corral
- Repair concrete pads around benches
- Remove graffiti on trash cans, picnic tables and benches
- Repair bollards in parking area to prevent vehicle access
- Review safety of park entrance location
- Establish appropriate location and install dog station



Neighbors identified needed repairs to park fences



Additional wood chips are needed for safety surfacing in the play area

For a complete directory of Report Card results for neighborhood parks, go to www.AnchorageParkFoundation.org/projects/reportcard.htm

The Anchorage Park Foundation developed the Anchorage Parks Report Card in partnership with the Eppley Institute for Parks and Public Lands at Indiana University, and community volunteers, thanks to a generous grant from the Rasmuson Foundation. The APF has raised over \$15 million dollars since 2004 to improve public parks, trail and recreation areas. To make a contribution or volunteer, please visit us at: