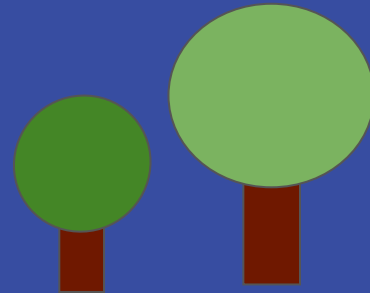




Sand Lake Park Report Card

May 10, 2016 Presented by Sand Lake Elementary 6th grade



Outer Park

Clean: average rating 1.5 out of 4

Safety: average rating 2.5 out of 4

Structure: average rating 2.5 out of 4

Appearance: average rating 0.5 out of 4

Functionality: average rating 2 out of 4



GROUNDS
CLOSED
TO PUBLIC
DURING
SCHOOL HOURS

Once I was happy and clean,
Then some people got very mean,
They didn't like what I had to say,
So they felt the need to give me a spray.

What am I?

SIGNS



Southwest entrance



South Dock Seating Area



Northwest Entrance

SIGNS

Is it necessary to keep this sign up all year long?



NO!

Would welcome signs be helpful at these entrances?



Southeast Entrance



Northeast Entrance



A paved pathway winds through a park with green grass and trees. The path is the central focus, leading from the foreground into the distance. The trees are mostly green, with some showing early autumn colors. The lighting is bright, suggesting a sunny day.

Pathways


Clean: average rating 2 out of 4

Safety: average rating 2 out of 4

Structure: average rating 2.5 out of 4

Appearance: average rating 2 out of 4

Functionality: average rating 1.5 out of 4

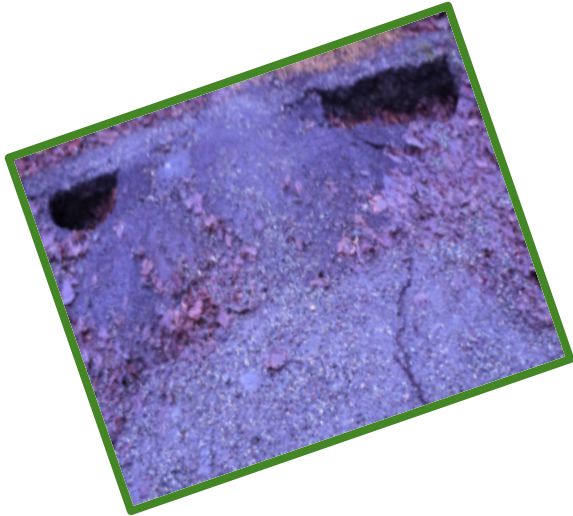
A small, rustic sculpture made of natural materials (sticks, bark, pinecones) on a log base, placed on a cracked asphalt surface. The sculpture features a central vertical element wrapped in brown bark, with several thin, bare branches extending from the top. It sits on a dark, cylindrical log base, which is surrounded by several brown pinecones and small twigs. The entire piece is positioned on a grey asphalt surface with prominent, irregular cracks. The background shows more of the cracked pavement and some scattered dry leaves.

**Crack here, crack there,
The mighty cracks are everywhere,
Bikes fall, people trip,
Watch your step, before you slip!**

What am I?

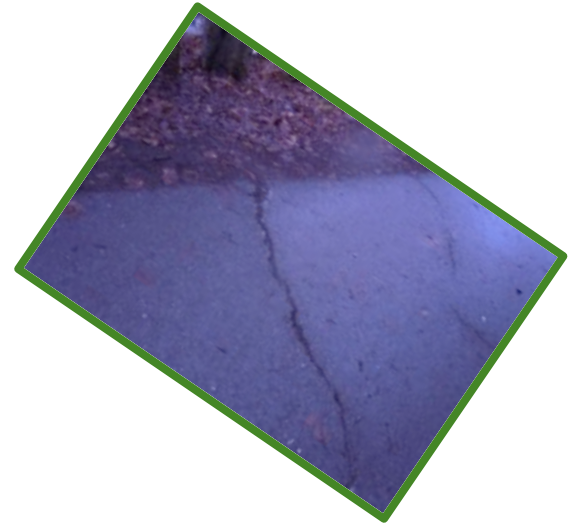
Pavement Problems

- Ballards are missing at the northeast and northwest entrances
- Tree roots are growing under pavement pushing the asphalt upward
- Near the docks the asphalt has holes which are creating tripping hazards
- Cracks approximately 5ft. long and 2in. in path are creating holes for bike tires to get stuck



Pavement Solutions

- New ballards
- New asphalt for the footpaths especially the one leading to the school playground
- Put tar in the cracks and holes
- Add gravel to make the footpaths official
- Have people help preserve the trail



Passive Recreation Area

Clean: average rating 1.5 out of 4

Safety: average rating 1 out of 4

Structure: average rating 2.5 out of 4

Appearance: average rating 1.5 out of 4

Functionality: average rating 2 out of 4

Take a seat, stay awhile,
Try to find a seating style,
A stump, a log, any things fine,
As long as you can fit your behind.

What am I?



Current Seating Areas



Seating Areas

In the Sand Lake area there are seating problems for a class sized group.



Outdoor classrooms!



Problems!

- The surface of the tables are not smooth and can give you splinters
- Not enough sitting space for an entire class

SOLUTIONS!

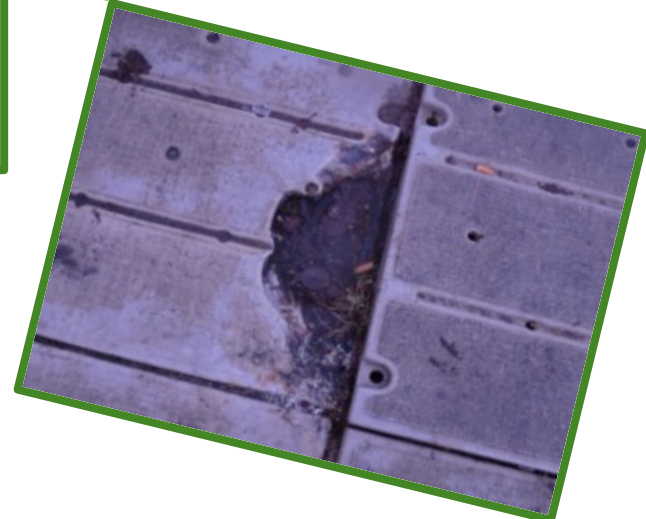
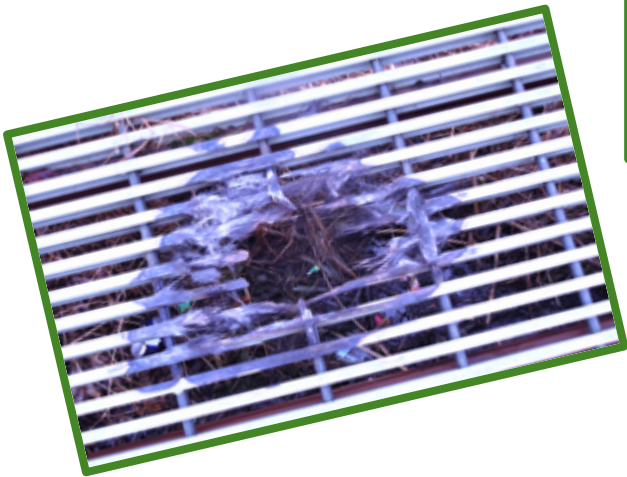
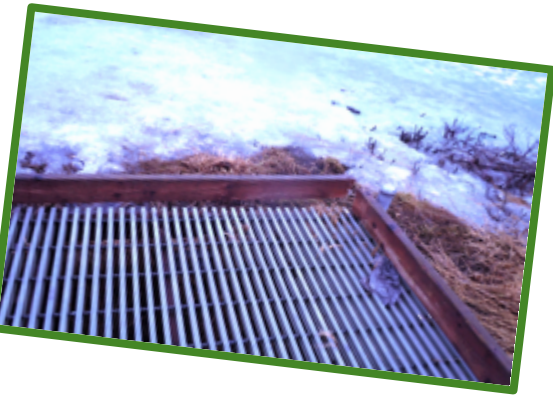
- ✦ Refinish the tables
- ✦ Get folding benches or tables



I still float on my back,
But with a crack,
My hollow poles are not
places for trash,
Every piece leaves a gash.

What am I?

Docks



Docks

PROBLEMS

- Bridge to dock is unstable
- Tripping hazard in boardwalk
- Lots of Trash
- Damaged siding



SOLUTIONS

- Add more supports to bridge
- Repair burn hole
- Put chicken wire under boardwalk
- Cover pipe with caps
- Replace the railing boards





Green Space

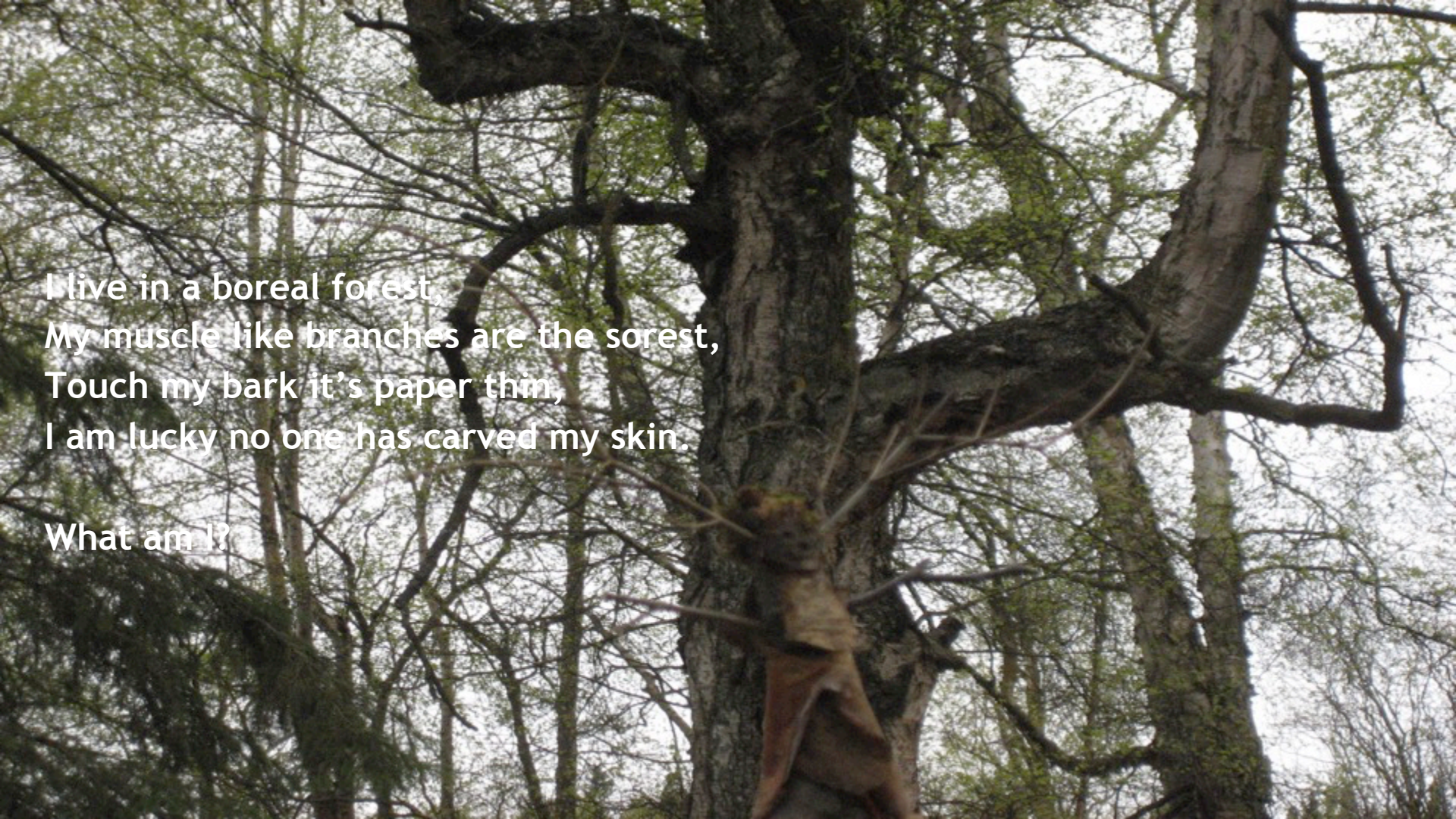
Safety: average rating 1.5 out of 4

Structure: average rating 1.5 out of 4

Appearance: average rating 1.5 out of 4

Functionality: average rating 1.5 out of 4

Cleanliness: average rating 1.5 out of 4

A photograph of a large, gnarled tree trunk in a forest. A moose head with large, velvet-covered antlers is mounted on the trunk. The background shows a dense forest of tall, thin trees with green foliage. The lighting is soft, suggesting an overcast day.

I live in a boreal forest,
My muscle like branches are the sorest,
Touch my bark it's paper thin,
I am lucky no one has carved my skin.

What am I?

Hazardous Trees

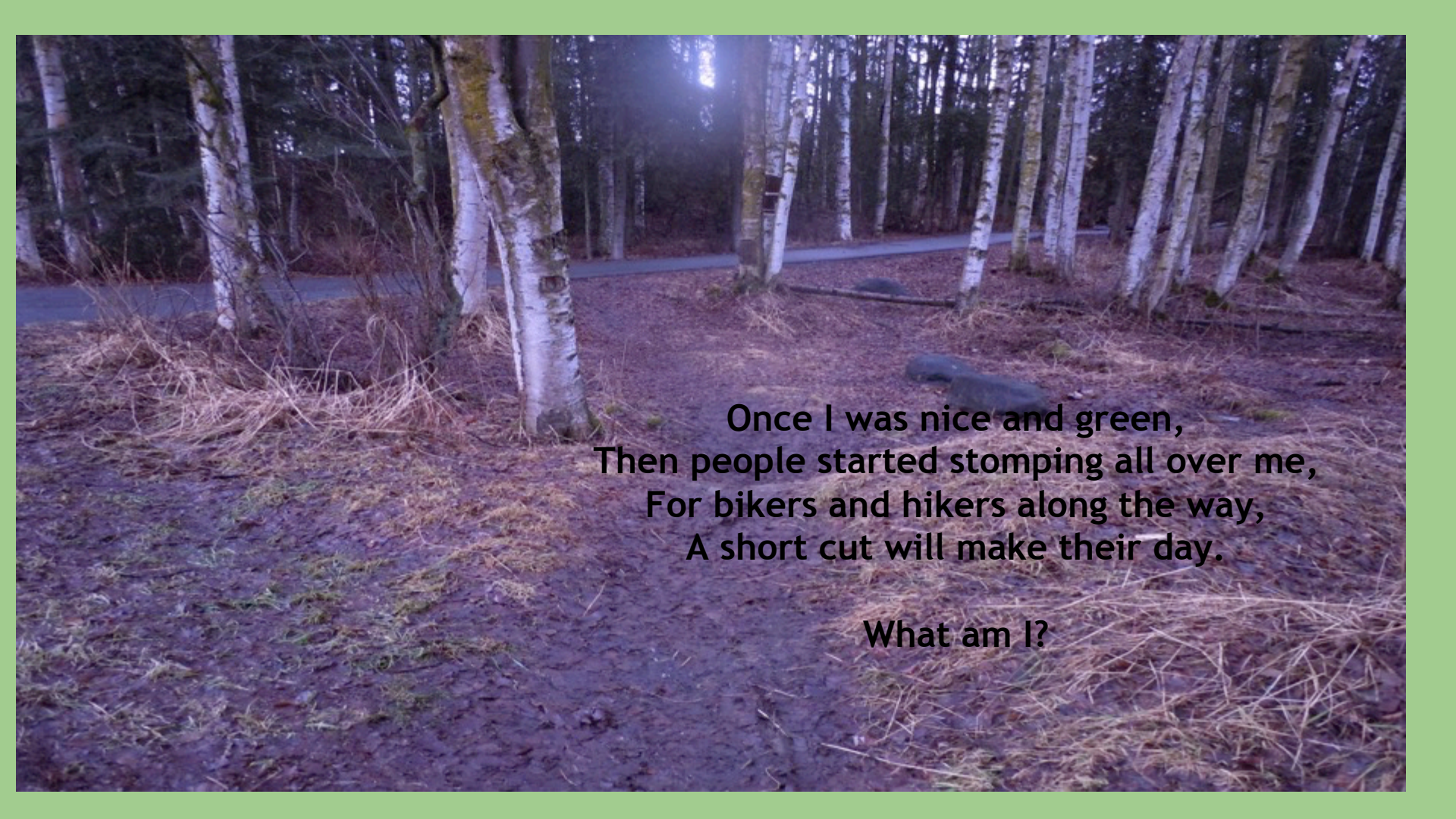
- ★ Dangerous leaning trees
- ★ Dead trees
- ★ Trees with graffiti



Solutions

- ★ Cut the leaning and dead trees
- ★ Sand or grind the trees with graffiti
- ★ Plant new trees to replace dead ones



A photograph of a forest path. The path is paved and runs through a forest of birch trees. The ground is covered in brown leaves and dry grass. A large, dark log lies on the ground in the foreground. The trees have white bark and some have moss growing on them. The lighting is somewhat dim, suggesting an overcast day or late afternoon.

**Once I was nice and green,
Then people started stomping all over me,
For bikers and hikers along the way,
A short cut will make their day.**

What am I?

Erosion

Problems

- Tripping Hazards/Falling
- Kills plants by flooding them or wind blowing them
- Loss of organic soil doesn't allow plants to grow
- Some trails are made by hikers and bikers.
- Can create a water stream because it is sloped (then makes a trail)


CAUTION



Erosion Solutions

- We can use dirt to cover up some of the small water rivers and holes.
- We can use tape to insure people and bikers not to use the trail.
- We can also plant more grass and plants to cover the pathways.



A photograph of a forest floor. A large, light-colored log lies horizontally across the top half of the frame. In the center, a tree stump with several pinecones sits on a piece of bark. The ground is covered with dry, brown grass and some green grass. Four aluminum cans are scattered on the ground: one on the left, one in the center, one on the right, and one in the bottom right corner that is crushed. The text is overlaid on the left side of the image.

I can carry things all around,
But now I live on the forest ground,
Please put us where we belong,
Then I can sing the clean up song.

What am I?

Trash Problems

- Pollutes the lake
- Harmful to wildlife
- Non-covered trash cans
- Makes park look bad by littering





Add Trash Cans

- Animal proof trash cans
- At northeast entrance, north dock, northwest entrance, southwest entrance



Trash Solutions



- Add “No Littering!!” signs, and add a fine
- Add doggie poop stations



Biohazardous Waste

Park users leave their waste on our Sand Lake trails. Due to not having the porta potties and dog stations.





I sit here awaiting the arrival of my
friend,
Part of my tree I must lend,
A woodpecker or a nuthatch may be
near,
Which will claim me first this year.

What am I?

Sand Lake Park is a home to many birds.

Such as,

~chickadees

~woodpeckers

~seagulls

What can we do to help these birds?? ;-)

What we can do to help:

~ Throw away / pick up your trash




~ Maintain trees

~ Don't use any pesticides



~ Add winter bird feeders

~ Add “Keep Pets on a Leash” signs

 The image cannot be displayed. Your computer may not have enough memory to open the image, or the image may have been corrupted. Restart your computer, and then open the file again. If the red x still appears, you may have to delete the image and then insert it again.

Please look over here



ALL PETS
MUST BE
ON A LEASH



PLEASE CLEAN UP
AFTER YOUR PET

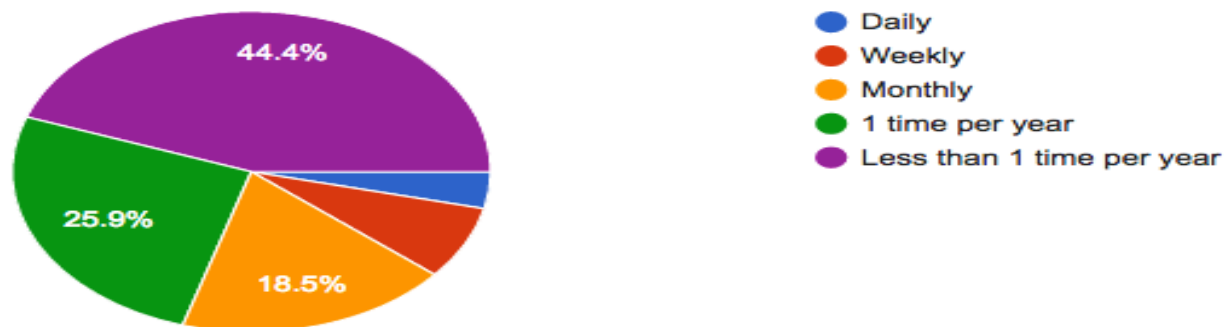
What else have we been up to?

- Walking Wednesdays
- Lunch time on dock
- Work time outside
- Creating Digital Map
- Park tours for Schools on Trails, Landscape Architect, and Japanese Visitors



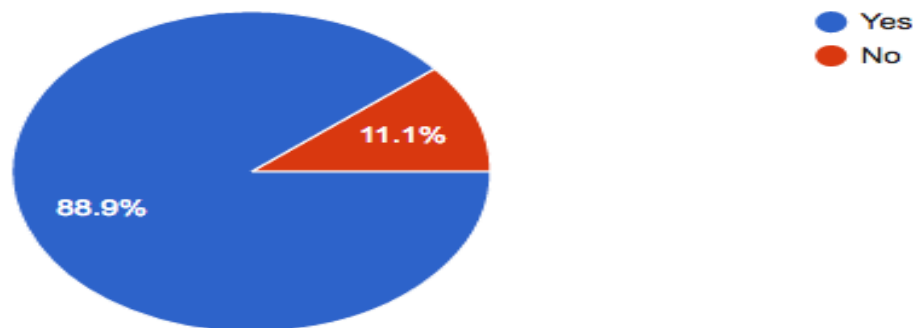
Sand Lake Park is the land between the west fence and the lake. How often do you use Sand Lake Park (SLP) behind our school with your classroom?

(27 responses)

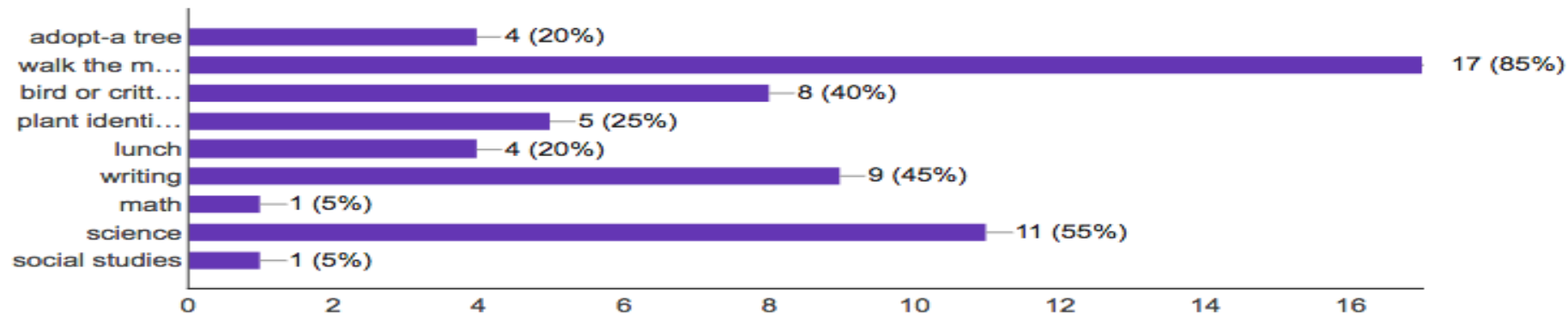


Would you like to use SLP as a learning environment with your class?

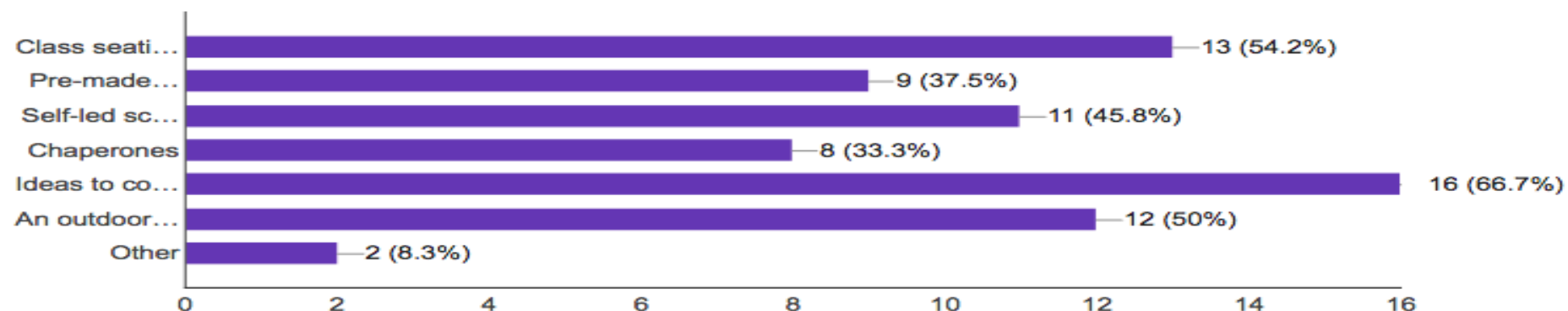
(27 responses)



How do you or have you used SLP with your students? (20 responses)

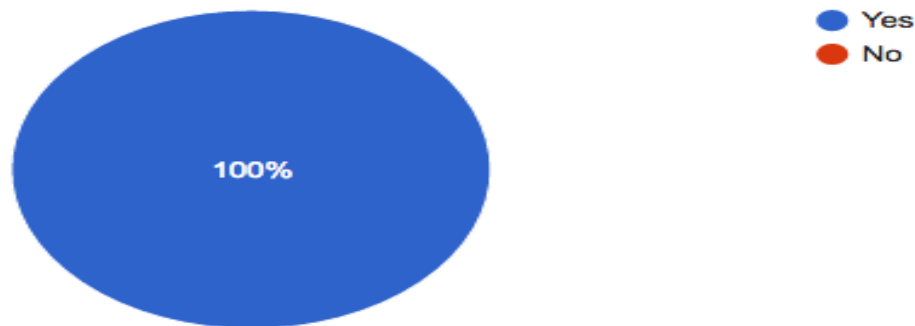


If you could use SLP more with your class what would help you? (24 responses)



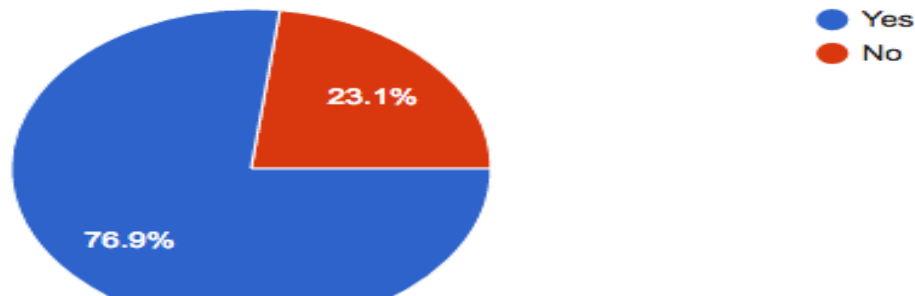
Would it be valuable to our students to adopt Sand Lake Park as a long-term commitment?

(26 responses)



Would you like to participate in adopting Sand Lake Park by having your class maintain one area or trail once a month?

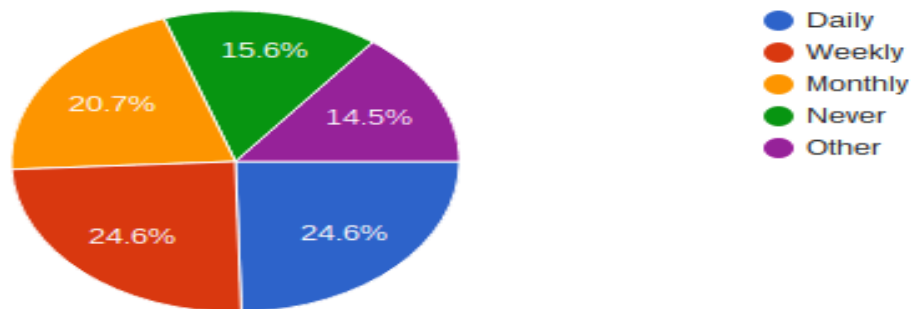
(26 responses)



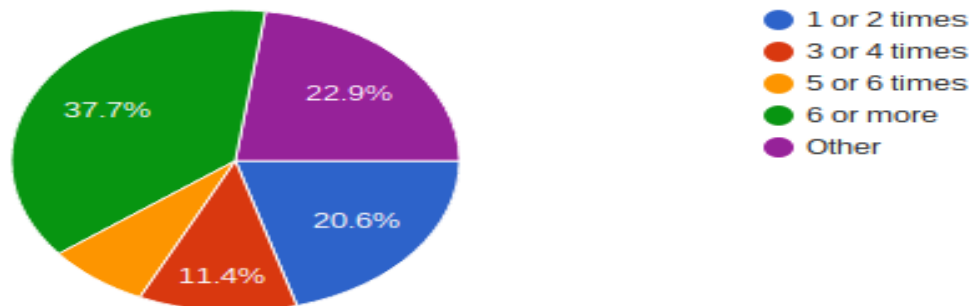
3rd-6th Grade Student Survey Responses



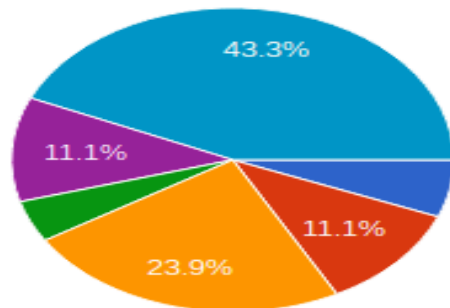
How often do you use SLP behind Sand Lake Elementary? (179 responses)



How many times this year have you used SLP? (175 responses)

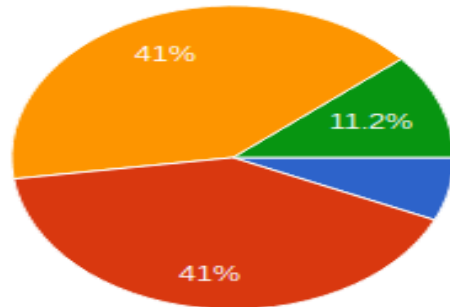


How do or would you use SLP? (180 responses)



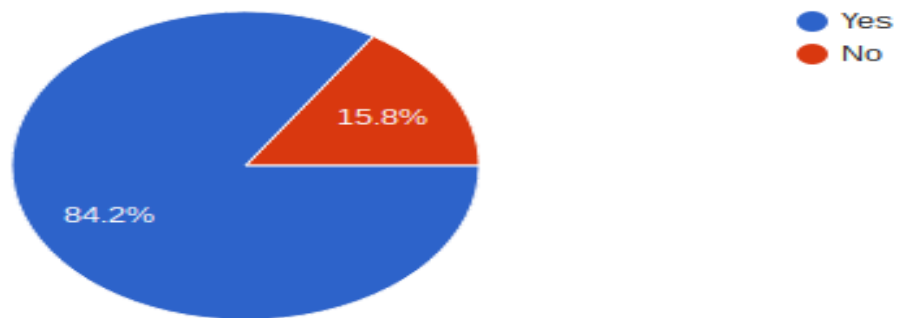
- Fish
- Bike
- Walking/runing
- Picnic
- Observing or studying
- All of the above

Who do or would you visit SLP with? (178 responses)



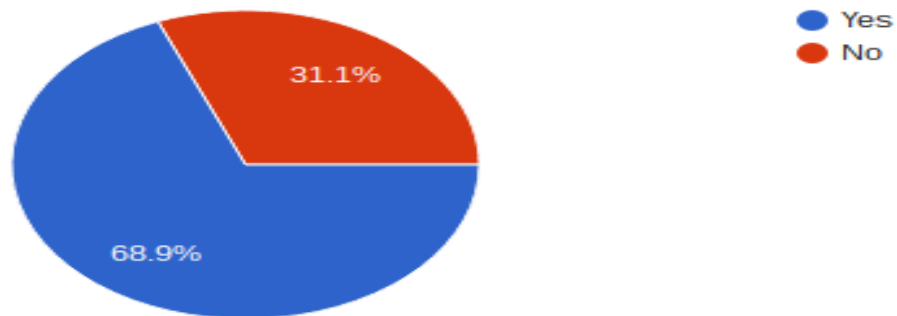
- Yourself
- Family
- Class
- Pets

If you had the chance would you use SLP more with your class? (177 responses)

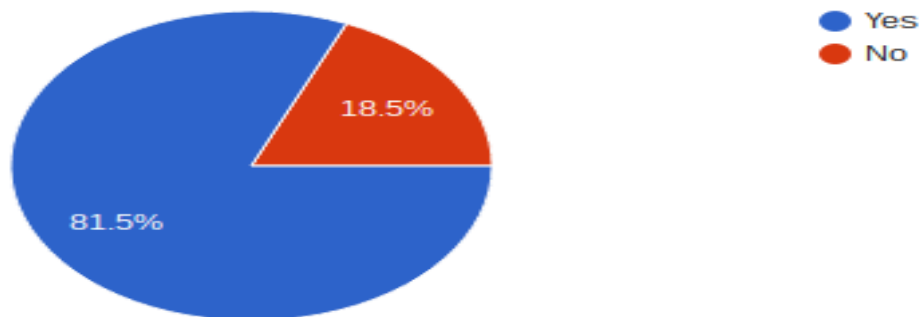


Would you want to have a once a month Park clean up day in SLP with your classroom?

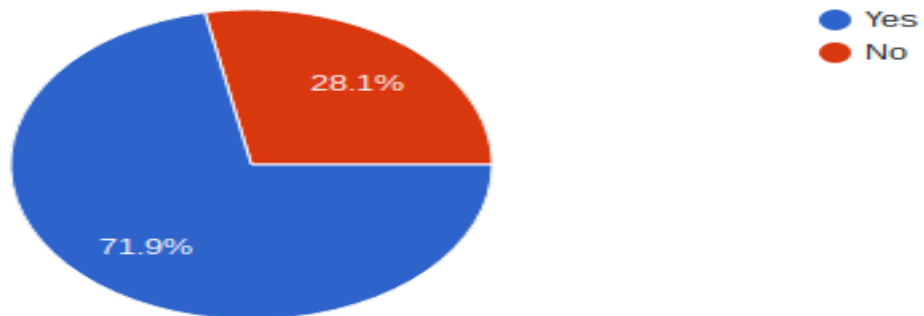
(180 responses)



Would you like an outdoor classroom in SLP? (178 responses)



Would you like a bathroom in SLP? (178 responses)



**Sand Lake Park could be better, don't you agree?
Let's work get together to make it green,
What a great opportunity,
To make a happy community.**



Where we hope to go....

Expose more classes to the park

Outdoor seating area large enough for class on overlook

Create and install Interpretive Signs

Add trash cans and dog stations

Build partnerships



The image cannot be displayed. Your computer may not have enough memory to open the image, or the image may have been corrupted. Restart your computer, and then open the file again. If the red x still appears, you may have to delete the image and then insert it again.

Sand Lake Park

