



2015

CAPIS Project Number 62099

Legislative District 22-K



Pamela Joy Lowry Park

The Anchorage Parks Report Card offers a comprehensive review of the condition of Anchorage neighborhood parks by reflecting community opinions and ideas. In the Fall of 2011, Anchorage community volunteers evaluated 51 neighborhood parks based on five criteria: cleanliness; safety; structure; appearance; and function. We will use this information to strategically employ resources, both financial and volunteer, to better meet the needs of our community.

In 2011, Pamela Joy Lowry Park received an D on its Report Card. Neighbors identified a number of areas in which Pamela Joy Lowry Park needed improvement. The play equipment is reaching the end of its useful life, and the safety surfacing does not meet accessibility standards. Funds will be used to replace the playground and install 100% accessible surfacing. In addition, the kiosk, park signs, and seating need repair and improvement, along with updates to the outdoor classroom. Neighborhood volunteers will trim trees, thin out brush and weed the green spaces.

In the summer of 2016, the Anchorage Park Foundation and Parks & Recreation Department plans to complete improvements in Pamela Joy Lowry Park with the help of community volunteers and the input of a neighborhood park committee. We invite the Alaska State Legislature to join us in investing in the future of Pamela Joy Lowry Park and the local community. The Anchorage Park Foundation will match legislative investment in neighborhood park fix-its with volunteer involvement and generous support from the Rasmuson Foundation's Anchorage Parks Initiative.

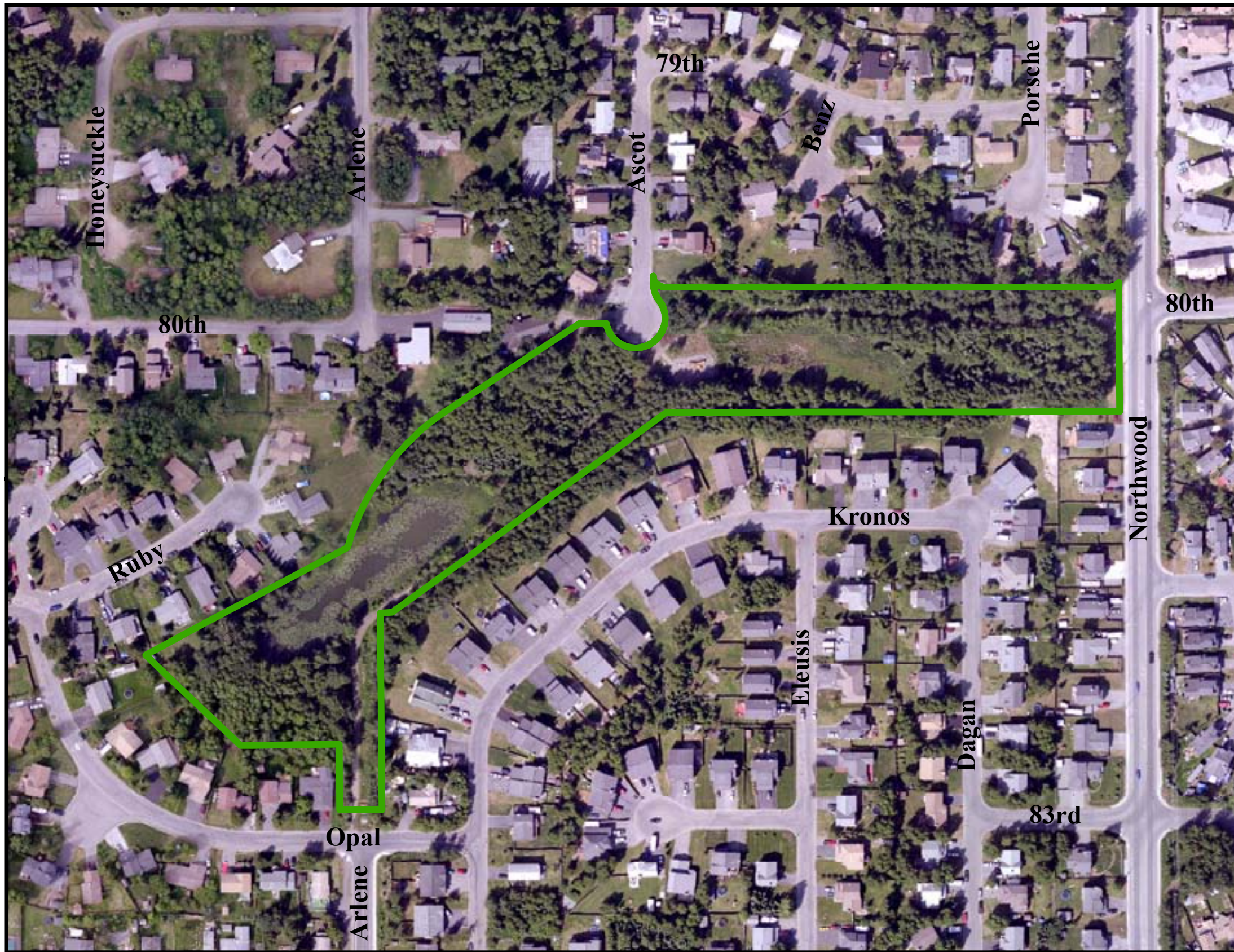


Parks & Recreation

Anchorage has 10,946 acres of municipal parkland, 223 parks, and over 250 miles of trails and greenbelts that link neighborhoods with surrounding natural open space and wildlife habitat. These are considerable assets for the citizens of Anchorage to enjoy and maintain.

Parks & Recreation launched the Clean & Green, Safe & Secure Campaign with the Anchorage Park Foundation to upgrade the safety, function, and appearance of Anchorage parks. To get involved, call 343-4587.





Project Cost Estimate

Project Budget	Cost
Total	\$250,000
Funding:	
Rasmuson Foundation funding**	\$40,000
Total 2015 Legislative Request	\$210,000

**If funding from the AK Legislature is secured for this project, the Anchorage Park Foundation plans to commit at least \$40,000 of Rasmuson Foundation funding to this neighborhood park.



Pamela Joy Lowry Park



WORKING TOGETHER TO
IMPROVE THE PARKS AND
TRAILS YOU LOVE!