

2015

CAPIS Project Number 62866

Legislative District 25-M



Spruce Park

This neighborhood park is currently open space with the potential to become a neighborhood jewel. Constructing a playground and installing safety surfacing will activate this space in a neighborhood that currently lacks a neighborhood playground. This property was acquired in 1997 from the Department of Environmental Conservation. In 1999 the area was seeded and bollards and a gate were installed.

In the summer of 2016, the Anchorage Park Foundation and Parks & Recreation Department plan to complete improvements in Spruce Park with the help of community volunteers and the input of a neighborhood park committee. We invite the Alaska State Legislature to join us in investing in the future of Spruce Park and the Abbot-Loop community. The Anchorage Park Foundation will match legislative investment in neighborhood park fix-its with volunteer involvement and generous support from the Rasmuson Foundation's Anchorage Parks Initiative.

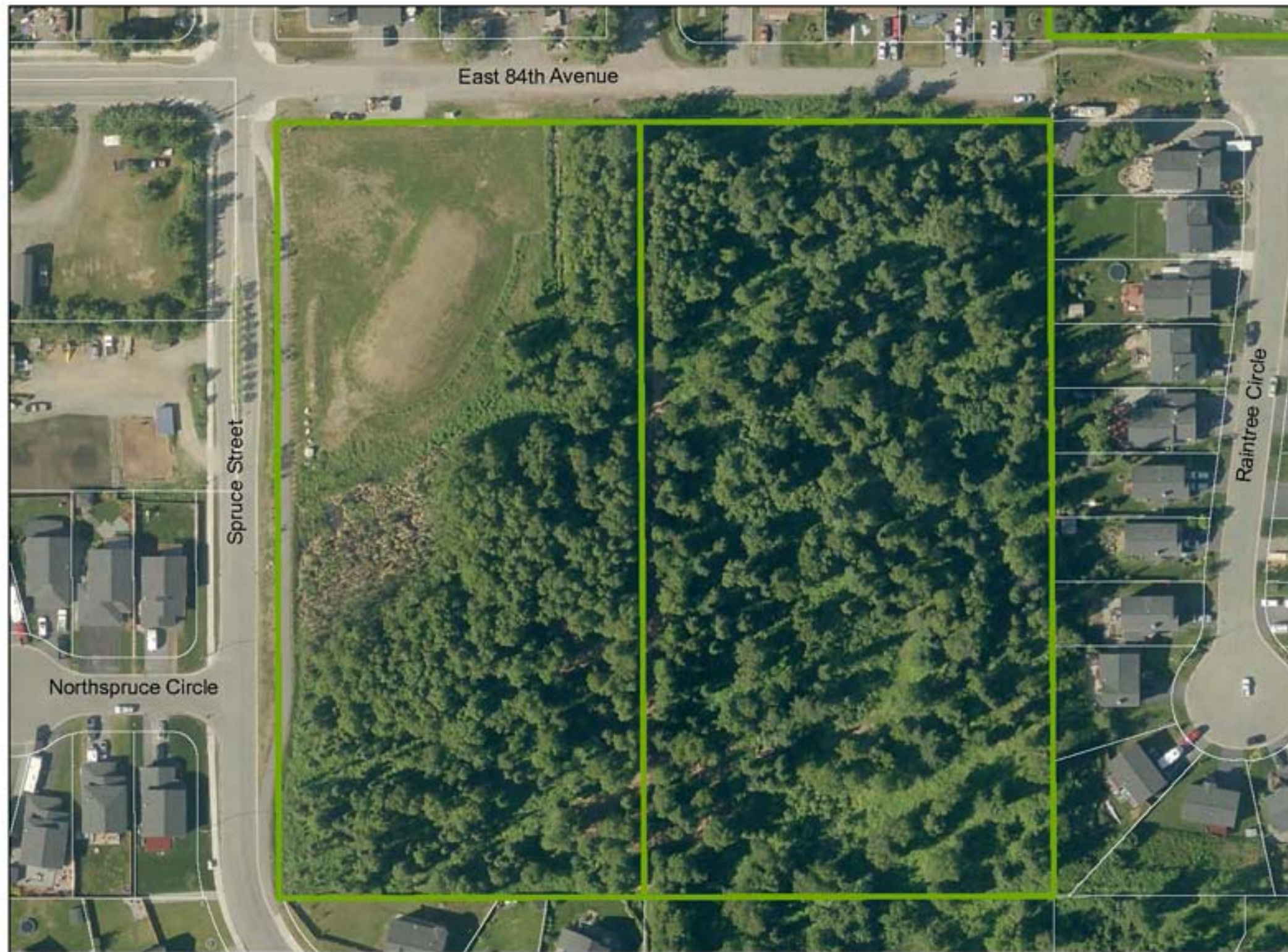


Parks & Recreation

Anchorage has 10,946 acres of municipal parkland, 223 parks, and over 250 miles of trails and greenbelts that link neighborhoods with surrounding natural open space and wildlife habitat. These are considerable assets for the citizens of Anchorage to enjoy and maintain.

Parks & Recreation launched the Clean & Green, Safe & Secure Campaign with the Anchorage Park Foundation to upgrade the safety, function, and appearance of Anchorage parks. To get involved, call 343-4587.





Spruce Park

## Project Cost Estimate

Project Budget	Cost
Accessible Playground Safety Surface	\$75,000
Play Equipment	\$100,000
Landscape Improvements	\$25,000
Safety Fencing	\$50,000
Amenities and Plaza	\$50,000
<b>Total</b>	<b>\$300,000</b>
<b>Funding:</b>	
Rasmuson Foundation funding**	\$40,000
<b>Total 2015 Legislative Request</b>	<b>\$260,000</b>

\*\*If funding from the AK Legislature is secured for this project, the Anchorage Park Foundation plans to commit at least \$40,000 of Rasmuson Foundation funding to this neighborhood park.

# Spruce Park



WORKING TOGETHER TO  
IMPROVE THE PARKS AND  
TRAILS YOU LOVE!

