

ZOOM IN 2



Ship Creek Trail
 Left on 1st Ave
 Follow Ship Creek Trail
 Right on N Lane St
 Left on Mountain View Dr.

ZOOM IN 1



Mountain View Dr
 Left on Meyer St after cresting the Tyson Elem. School hill
 Russian Jack Springs Park

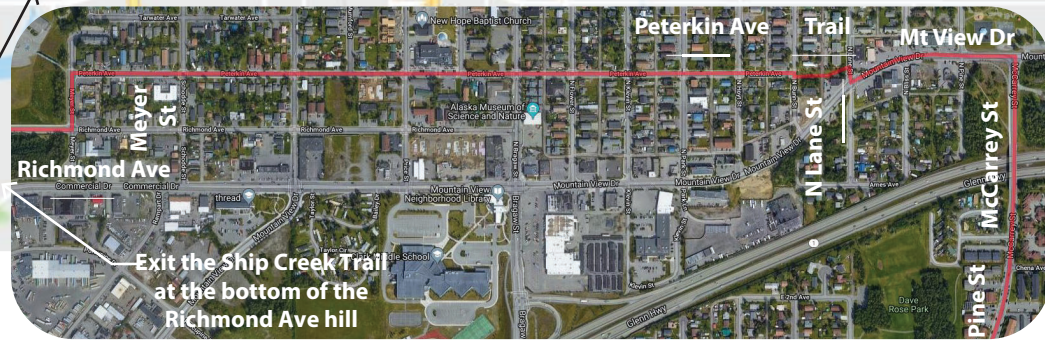
ZOOM IN 2



Trail begins
 Split in trail - after crossing Northern Lights bridge turn left

Split in trail at University Lake: take the trail left

ZOOM IN 1



Exit the Ship Creek Trail at the bottom of the Richmond Ave hill

Entrance to Coastal Trail

Separated pathway on Raspberry Rd

Kincaid Park

Sand Lake Rd

Dimond Blvd

Exit Campbell Trail

Ted Stevens Anchorage International Airport

SPENARD

Follow Campbell Trail

W 88th Ave

Jewel Lake Rd

Cross Lake Otis via tunnel

BIKE THE MOOSE
32.41 MI
1,061 FT ELEV. GAIN