

# Government Hill Wayfinding and Signage

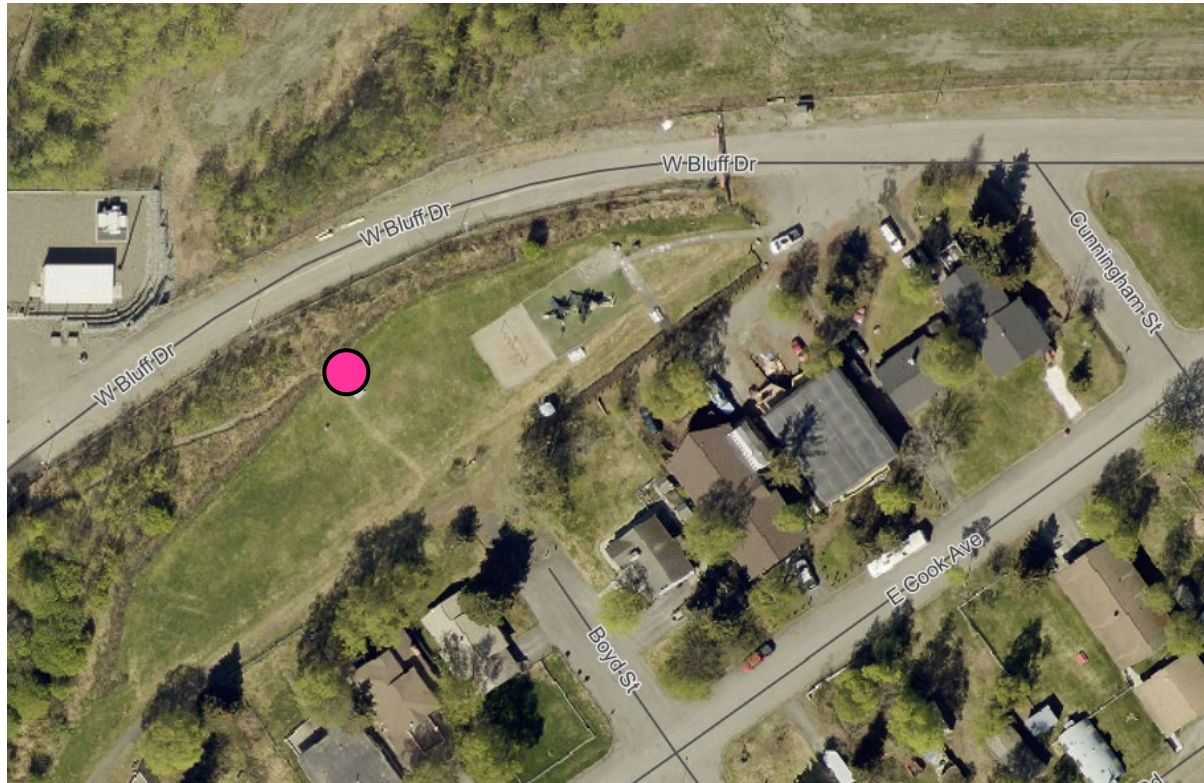
- 4x4 Directional Post
- 10x10 PDIR.3





# Suzan Nightingale McKay

- 10 x 10 install near trailhead





# Al Miller Park

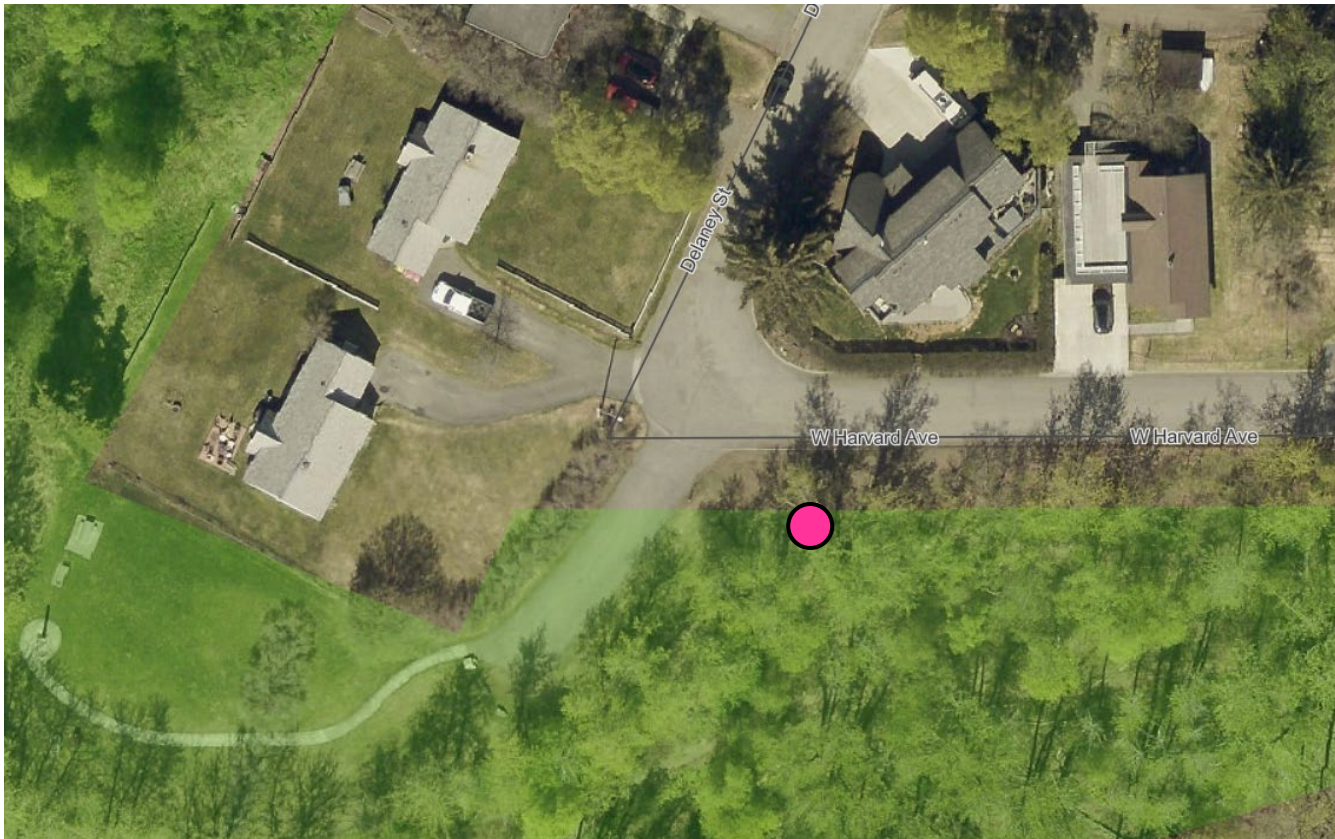
- Remove old bollard; install new 10x10 along path





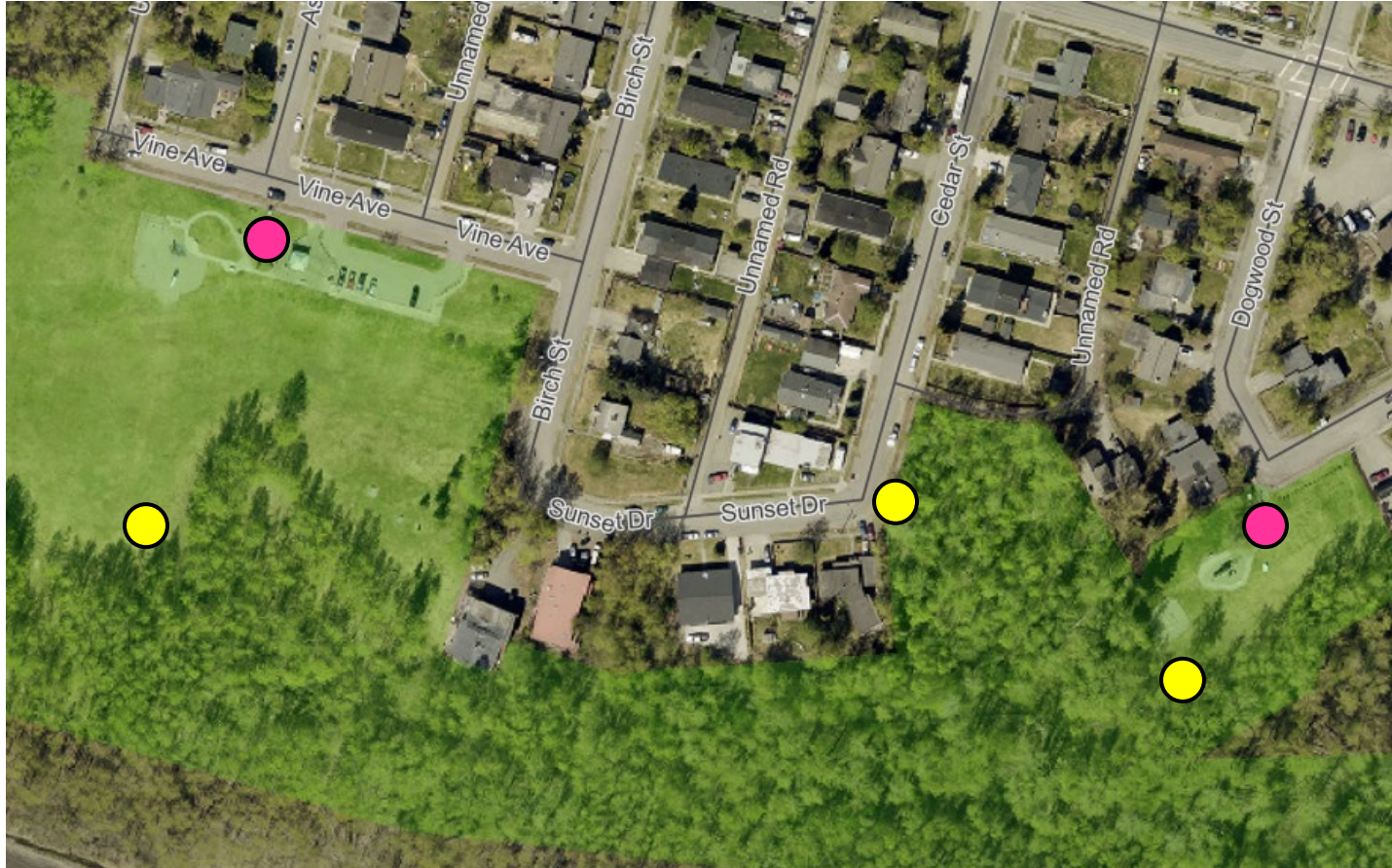
# Brown's Point Trailhead

- 10 x 10 install near other trailhead amenities





# Sunset and Alderwood Parks



Details on following  
slides from L to R



# Sunset Park and Trailhead

- Little Library has been demolished, reuse location for 10x10
- 4x4 post at trailhead, lower field area





# Alderwood Park Trailhead (Cedar St @ Sunset Dr)

- Remove bollard and replace with 4x4 post



# Alderwood Trailheads

- New 10x10 near park amenities, 4x4 at trailhead at park perimeter

